

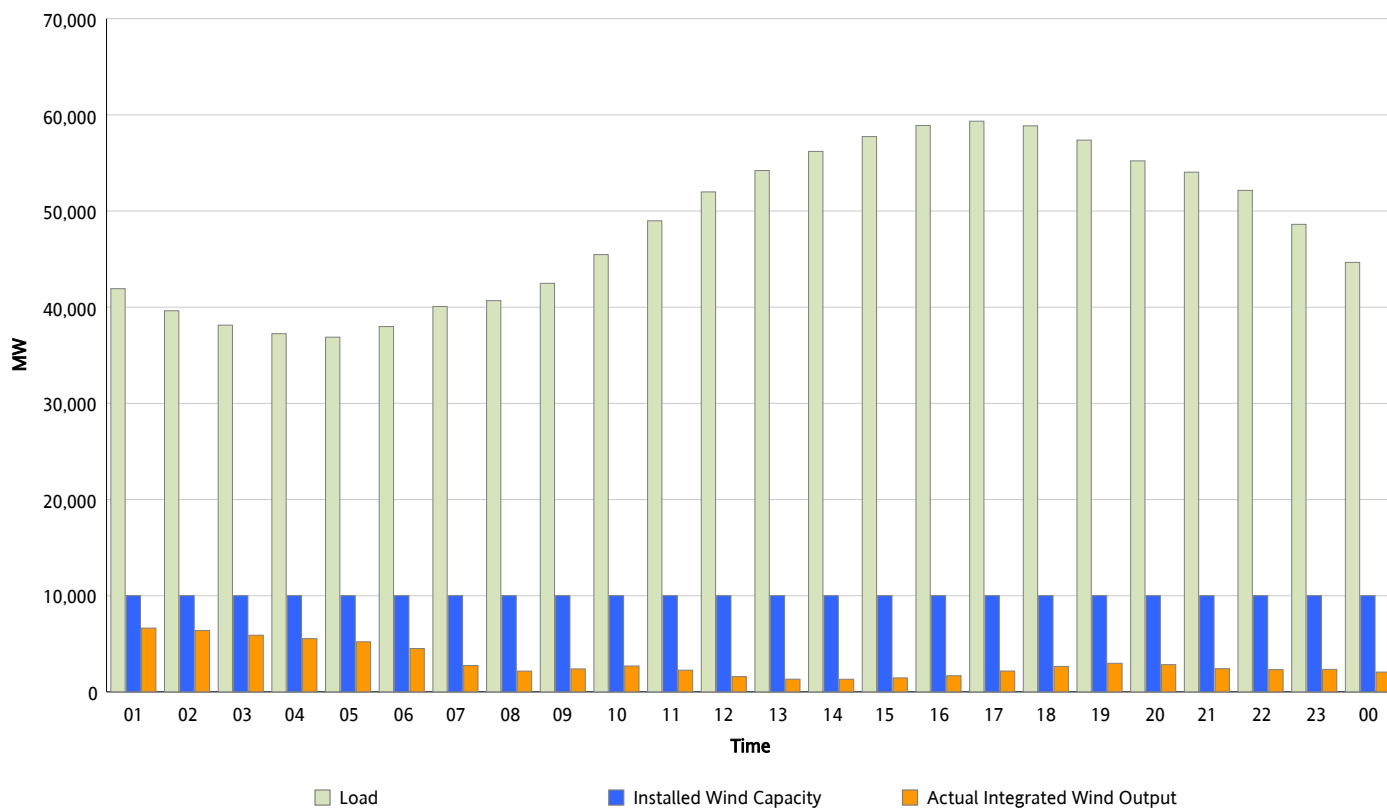


ERCOT Grid Operations

Wind Integration Report : 08/16/2012

Peak Load	59,341 MW
Load Peak Hour (HE)	17
Wind Over Peak	2,166 MW
Wind Record 06/19/12	8,368 MW
Max Wind Value*	6,734 MW
Wind Peak Time	00:37
Wind Integration %	16.25 %

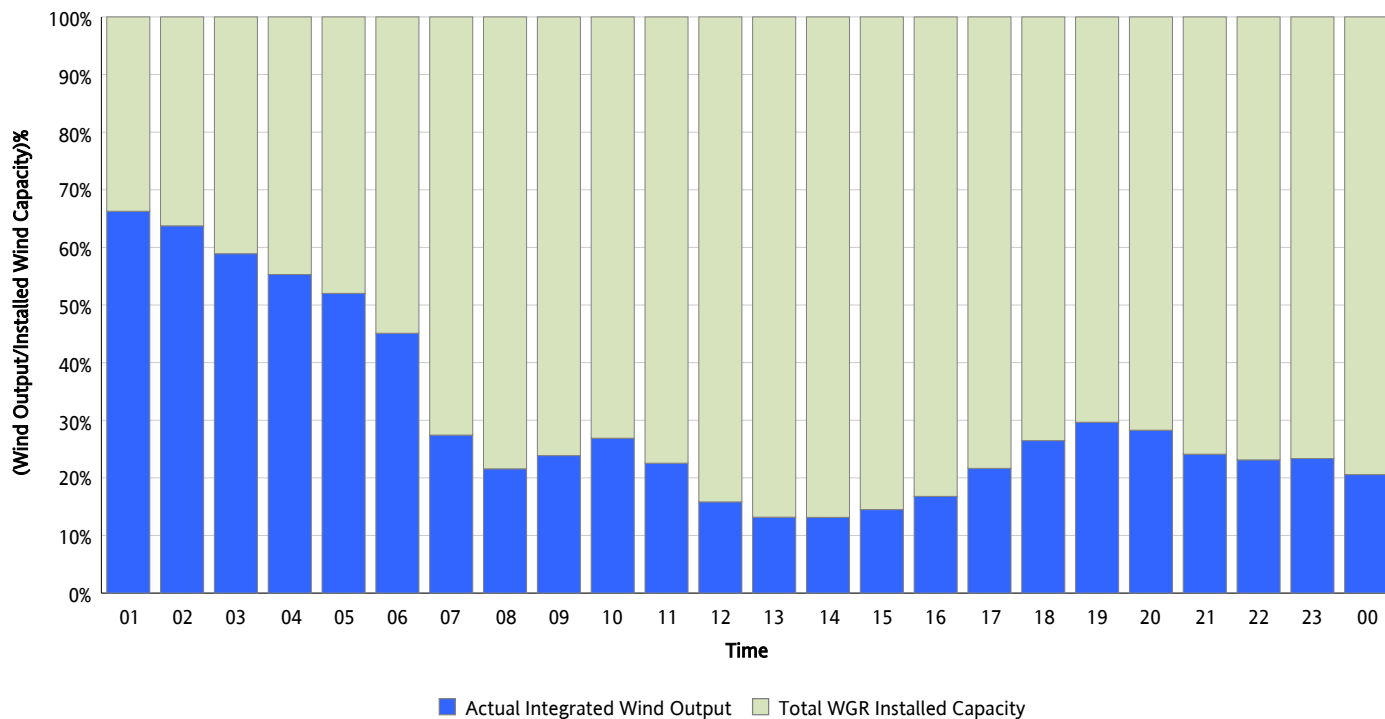
Hourly Average Actual Load vs. Actual Wind Output
08/16/2012



* Wind Record and Wind Max represent instantaneous values and the rest of the values are integrated over the hour

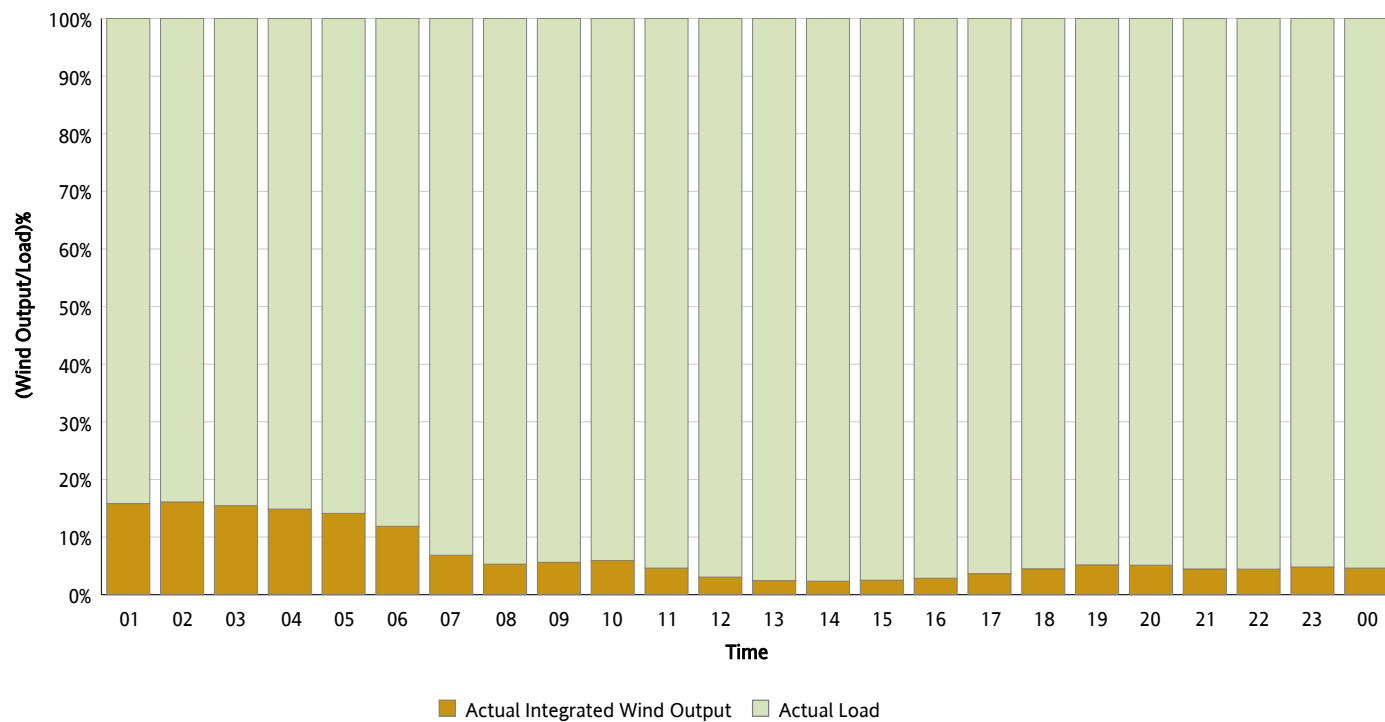
Actual Wind Output as a Percentage of the Total Installed Wind Capacity

08/16/2012



Actual Wind Output as a Percentage of the ERCOT Load

08/16/2012



ERCOT Load vs. Actual Wind Output

08/09/2012 - 08/16/2012

